

Grasso RC49

Specifications

| | |
|--------------------|-----------------------------|
| Бренд | Grasso |
| Тип | RC49 |
| Хладагент | NH 3 (ammonia) |
| кВт at +10°C/+40°C | 329,5 |
| kW at 0°C/+40°C | 215,7 |
| kW at -5°C/+40°C | 170,1 |
| кВт at -10°C/+40°C | 130,6 |
| На стальной раме | ✓ |
| Прессостаты | ✓ |
| Манометры | ✓ |
| Смотровое стекло | ✓ |
| м3 / h | 281,1 at 1450 RPM |
| Примечания | Y.o.b. 1996 |
| Размеры | 1950x900x1560 mm (LxWxH) |
| Stock | 1 |



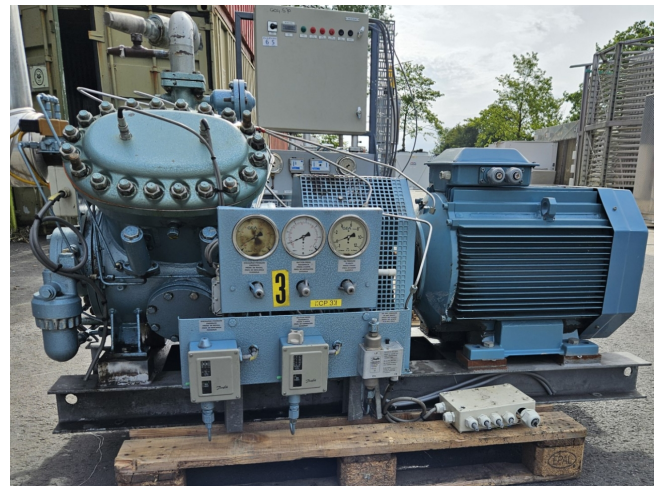
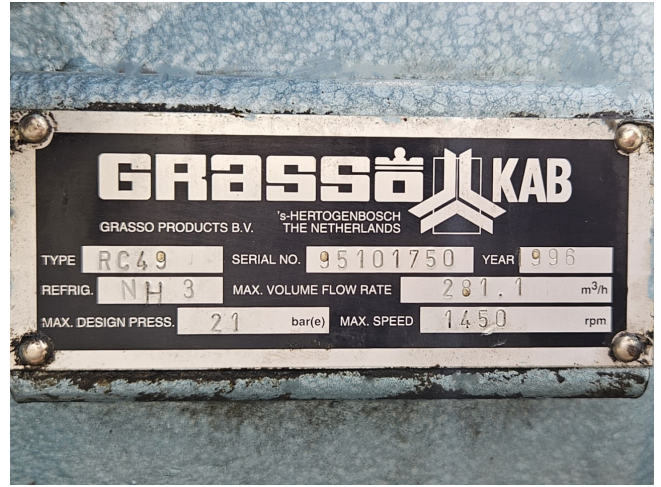
Description

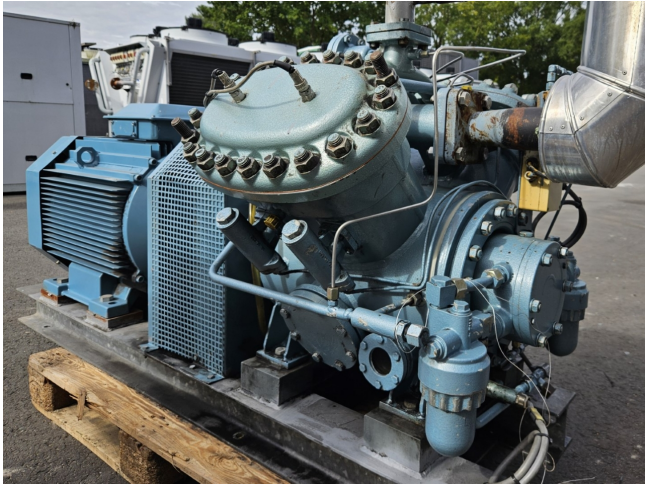
Used Grasso RC49

Used Grasso RC 49 reciprocating compressor on NH3 (Ammonia). Complete with a ABB M2AA 250 SMA 4 electric motor - 50 Hz - 55 kW - 1480 RPM, pressure and safety switches/gauges and sight glass. The compressor has a displacement of 281,1 m³/h at 1450 RPM.

*Why choose for HOSBV? Were not only the largest used refrigeration specialist in Europe, but also, we deliver all equipment including an extensive test, warranty and industrial cleaning.

*Optional we can also perform a new paint job and arrange the logistics.





| ABB Motors | | | | | | | | | | CE | |
|----------------------------|----|----|-------|-----|-------|--------------------------------|-------------------|--|--|----------|--|
| 3-Motor M2AA 250 SMA 4 | | | | | | | | | | | |
| IEC 250 S/M 65 | | | | | | | | | | | |
| No | | | | | | | | | | | |
| Ins.cl. F | | | | | | | | | | IP 55 | |
| V | Hz | kW | r/min | A | cos φ | I _A /I _N | t _E /S | | | | |
| 690 Y | 50 | 55 | 1480 | 57 | 0.86 | | | | | | |
| 400 Δ | 50 | 55 | 1480 | 98 | 0.86 | | | | | | |
| 660 Y | 50 | 55 | 1475 | 60 | 0.86 | | | | | | |
| 380 Δ | 50 | 55 | 1475 | 103 | 0.86 | | | | | | |
| 415 Δ | 50 | 55 | 1480 | 96 | 0.84 | | | | | | |
| 440 Δ | 60 | 63 | 1775 | 103 | 0.86 | | | | | | |
| Prod.code 3GAA 252 001-ADA | | | | | | | | | | | |
| 6315/C3 | | | | | | | | | | 275 kg | |
| 3GZV 194 004-7 | | | | | | | | | | IEC 34-1 | |

